

---

## MultiStim Fracture Isolation System

# MultiStim Hydraulic Port Valve

- Full bore inside diameter
- Adjustable actuation pressure
- Permanently locks open
- Exceeds API Q1 standards

The MultiStim Hydraulic Port Valve is strategically placed as the toe or first frac zone port when used in the ball actuated Retriev-a-Seat (RAS) valve system. Multiple valves can also be used in a non-ball hydraulic actuated frac port system in conjunction with the MultiStim Cup Frac Tool System.

### Full Bore Inside Diameter

External shifting components eliminate any ID reduction and any drill out requirements to gain lower access of the liner.

### Adjustable Actuation Pressure

The hydraulic opening pressure can be adjusted prior to installation.

### Permanently Locks Open

Once actuated, the valve is permanently locked open.

### Exceeds Design and Manufacturing Standards

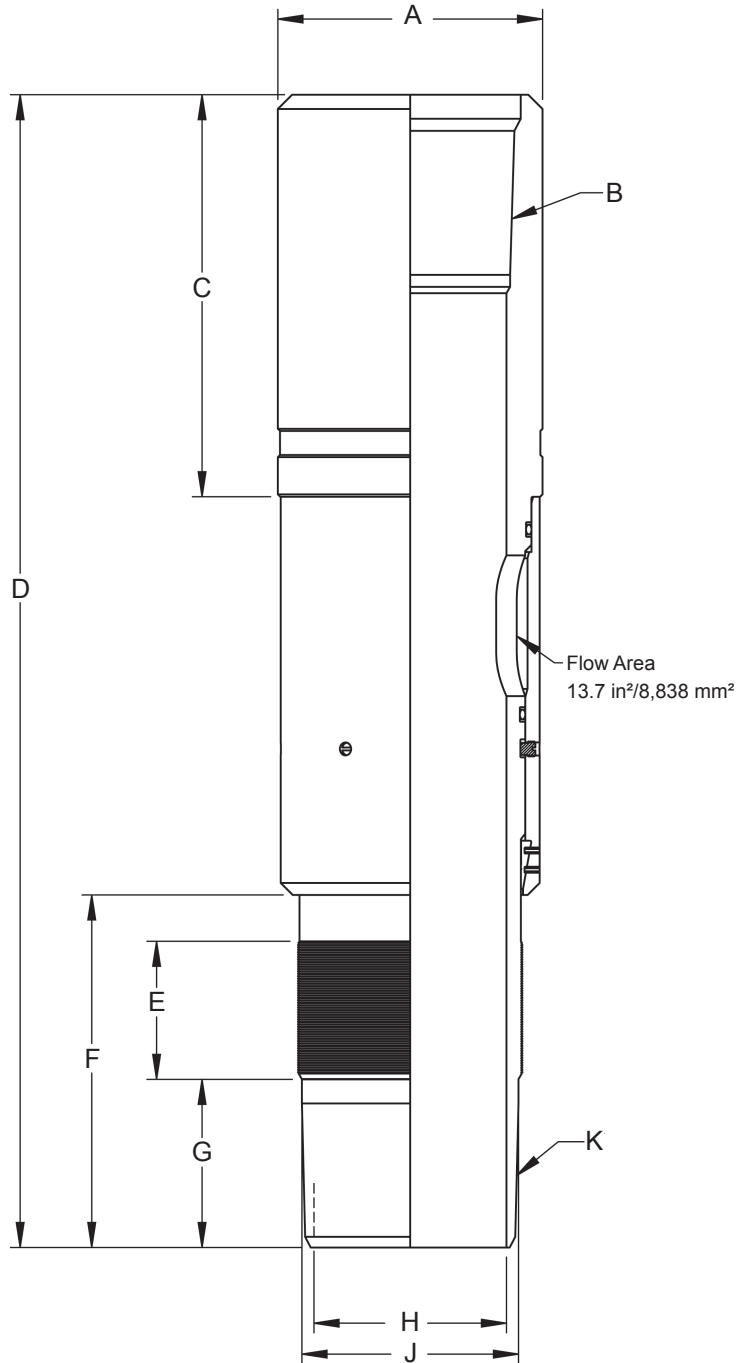
The MultiStim Hydraulic Port Valve is designed with performance specifications exceeding that of the liner casing. MultiStim Fracturing Isolation System components are designed and manufactured to API Q1 standards at our certified manufacturing facility.



**MultiStim Fracture Isolation System**  
**MultiStim Hydraulic Port Valve**

Dim.	(in)	(mm)
A	5.50	139.70
B	4.500 8RL	
C	8.40	212.60
D	24.00	609.60
E	2.90	73.03
F	7.30	186.40
G	3.50	88.90
H	4.00	101.60
J	4.50	114.30
K	4.500 8RL	

Tool Ratings		
Rating	Value	
Burst	5,000 psi	34,500 kPa
Collapse	5,000 psi	34,500 kPa
Tensile	269,000 lbs	120,100 daN
Activation Pressure	2,850 – 3,150 psi	19,650 – 20,685 kPa



*This document contains copyrighted and confidential information and is the property of Logan Completion Systems, and is revealed for limited purposes. It may not be reproduced without the written consent of Logan Completion Systems. It is not to be rented, loaned, or sold, either alone or in conjunction with equipment or product.*